

ACCESSORIES

SPIGOTS

Spigot for aubrilam bracket

Our standard brackets are with a lateral spigot diameter 60 mm, length 100 mm. The G-thread spigot are available only with an extra cost, and only for top fixation or suspended.

Lateral spigot

Our standard lateral spigot is Ceno.

SPECIFIC SPIGOTS

Threaded tube Ø 27 mm - G-thread - L 50 mm on top

Threaded tube Ø 27 mm - G-thread - L 50 mm on bracket

Spigot for lateral fixing Ø 60 mm - L60 to 100 mm with an angle

Top spigot Ø 76 mm

Top spigot Ø 60 mm - L 110 to 300 mm for square column

Top spigot Ø 60 mm - L 110 to 300 mm for cylindrical column

Top spigot Ø 90 mm - L 60 to 100 mm

Reference

PPD0101

PPD0102

PPD0103

PPD0105

PPD0126

PPD0127

PPD0121

CENO

Reference	Inclination	Weight
Lateral spigot SRE0149	5°	0,9 kg

NOTE

Minimum 2 units. Only for diameter above 76 mm.



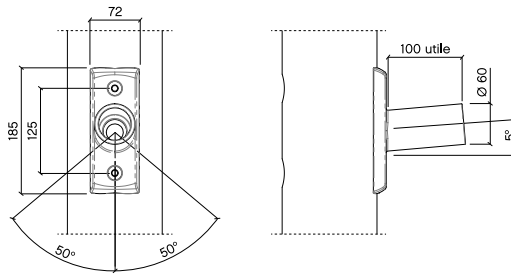
MATERIALS

Spigot in cast aluminium, polyester powder coated finish.



STANDARD COLOUR IDENTITY

Grey 900 sanded.



FITTINGS FOR KAKEMONOS

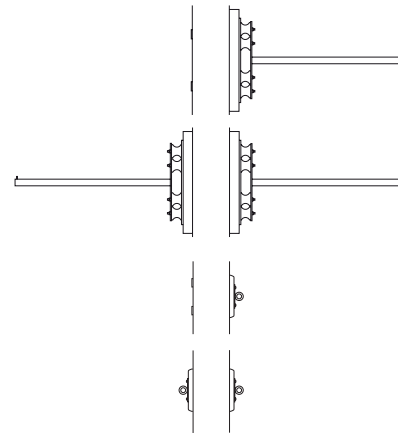
	Reference
Kakemono arm - Ø 30 mm single - L 600 mm	SRE0163
Kakemono arm - Ø 30 mm double - L 600 mm	SRE0164
Kakemono arm - Ø 30 mm single - L 900 mm	SRE0161
Kakemono arm - Ø 30 mm double - L 900 mm	SRE0162
Kakemono single fitting point	SRE0165
Kakemono double fitting point	SRE0166

NOTE For winds up to 100 km/h, the kakemonos fittings must be disassembled.



FIXATION

Fittings delivered not assembled, an instruction note is enclosed. Sandows and kakemonos not supplied. Paulstra seals must be changed each 2 years. A first substitution kit is supplied.

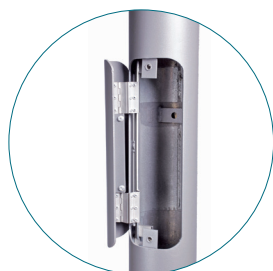


ACCESS DOOR WITH EXTERNAL HINGE

	Reference
Wood access door with external hinge	PPD0178
Metal access door with external hinge*	PPD0179

NOTE

Minimum 2 units. Technical sheet on request.
* For diameter 114 mm. contact us for other diameters.



REPLACEMENT PART

Wood access door (consult us)
Metal access door (consult us)

BASE SECTION ADAPTATOR PLATE

	Reference
Base section adaptator plate m18	PPD0239
Base section adaptator plate m24	PPD0240

NOTE Minimum 2 units. Only for column without brackets. Be careful with the position of the lighting.

