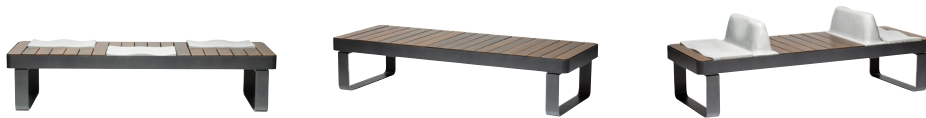
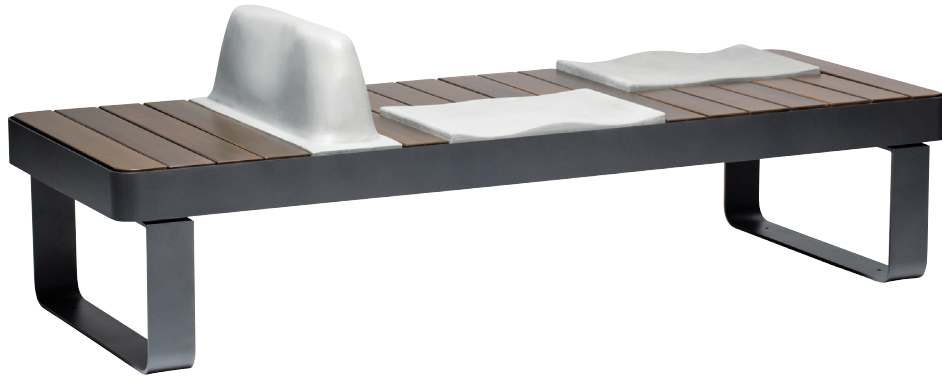


RENDEZ-VOUS Benches



| | 1. | 2. | 3. | 4. | 5. | 6. | 7. |
|--------------------|----------------|----------------|----------------|----------------|----------------|----------------|----------------|
| RENDEZ-VOUS | | | | | | | |
| Reference | PMR0221 | PMR0222 | PMR0223 | PMR0224 | PMR0225 | PMR0226 | PMR0227 |
| Weight | 133 kg | 119 kg | 163 kg | 154 kg | 74 kg | 135 kg | 105 kg |

+ Flavard & Saguez design + 7 possible combinations for 1 structure



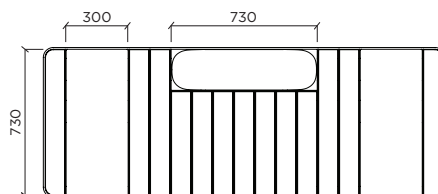
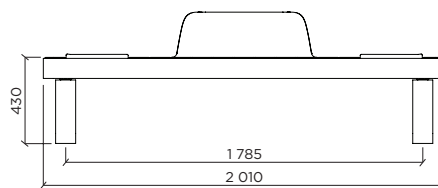
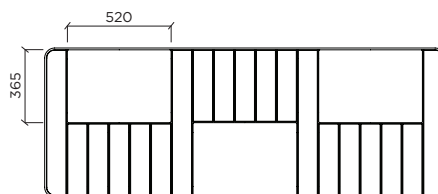
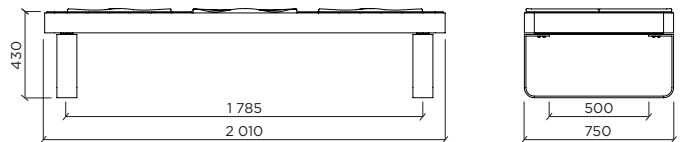
MATERIALS
 Electro-galvanised steel structure, polyester powder coated finish.
 Solid wood slats in Accoya® acetylated timber from sustainably managed forests. Timber finished with four coats of woodstain. High performance concrete seats and backrests, protected with a BF24h type stain.
 Fixation to the ground is recommended.

FIXATION
 Chemical sealing.
 Anchor rods*: threaded rod M10 x 80.
 Fixation holes: Ø 12 mm.

MEASUREMENTS
 Structure h x L x w: 430 x 2 010 x 750 mm
 Small seat L x w: 520 x 365 mm Large seat L x w: 730 x 300 mm Backrest h x L x w: 225 x 730 x 205 mm
 Weight: 12 kg Weight: 15 kg Weight: 37 kg (hollow)

STANDARD COLOUR IDENTITY
 Wood: Brume or Dark Mineral - Metal: Black 100 sanded.

C Product capable of offering Connect2 technology fulfilling requirements:
 - connection
 - access to information
 - charging



NOTE
 *Anchor rods supplied on request only.