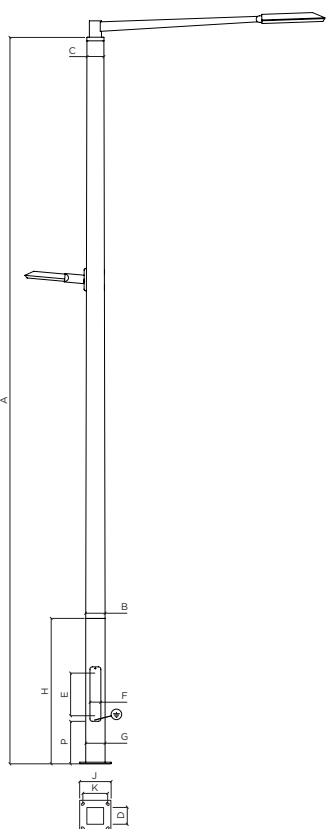
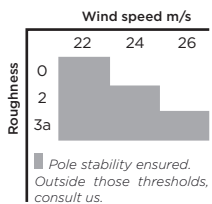


UTYL 2 Lighting points 6 m
LED 36.5 W - 4 484 lm + 14 W - 1 781 lm*



Square tapered Round tapered

UTYL 2 LED 36.5 W + 14 W*

PCS9662 PCD9662

A	m	Pole height	6	6
B	mm	Shaft section/diameter at base	160	168
C	mm	Shaft section/diameter on top	140	140
D	mm	Door: useful depth	137	125
E x F	mm	Door: useful height x width	450 x 90	450 x 90
P	m	Distance door bottom to plate	0.35	0.35
G	mm	Base section/diameter	160	168
H	m	Base height	1.2	1.2
J	mm	Base plate dimensions	260 x 260	260 x 260
K	mm	Spacing dimensions	200 x 200	200 x 200
L	mm	Anchor rods**	4 HA16 M14 - 300	4 HA16 M14 - 300
	kg	Weight	96.1	79.6
	m	Height of the light	6.12	6.12
	m	Height of offset light	4	4
	m	Offset reach of bracket to axis	1.9	1.9



WOODEN SUPPORT

Glued laminated timber GL24H shaft certified ACERBOIS GLULAM, produced with sawn planks from sustainably managed forests and respecting HTE process. Timber finished with four coats of woodstain.



Flush base in galvanized steel and polyester powder coated finish. Overlying top in pressed galvanized steel, polyester powder coated finish. Design and manufacture according to rules defined by DEE 120017-00-0106 Wood and metal lighting columns and specifications from European Technical Approval ETA-18/0016.

CE marked product: Conformity certificate CE 0679-CPR-0473.

SQUARE TAPERED SUPPORT

Degrressive square column
Square base

ROUND TAPERED SUPPORT

Round tapered column
Round base



STANDARD COLOUR IDENTITY

Wood: Brume - Metal: Black 100 sanded.

Cpa Car parking area - **Pr** Public road - **Ap** Access path - **Cp** Cycle path - **Pf** Pedestrian footpath - **S** Street



TOP: LED LIGHT 36.5 W*

See features of 36.5 W LED lighting points page 118.



OFFSET LIGHT: LED LIGHT 14 W*

Asymmetrical elliptical lighting.



1 781 lm - Colour temperature 4 000 K (T° 3 000 K as option).

Colour rendering index R_a > 80.

Cast aluminium, aluminium and stainless steel.

Safety glass, antireflection-coated. Reflector in pure anodized aluminium.

Dust-proof and water jet protected.

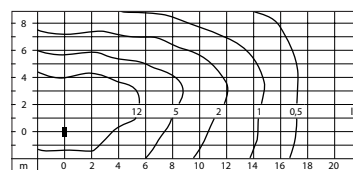
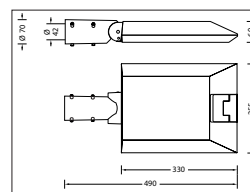
Adjustable joint for beam direction 0° or 15°.

Delivered with connecting cable X05BQ-F 4 x 1² - Length 10 m.

Power supply LED 220-240 V - 0/50-60 Hz.

DC 176-264 V - Dimmable 1-10 V.

Class II - IP 66 - IK 08 - Weight: 5 kg.



Light distribution LED 14 W.

NOTES

Luminaires delivered without case, light head not assembled on the shaft.

The lighting fixture must be connected to the earth of the base section thanks to the green/yellow wire provided for that purpose.

*Power and luminous flux data likely to vary.

**Anchor rods supplied on request only.