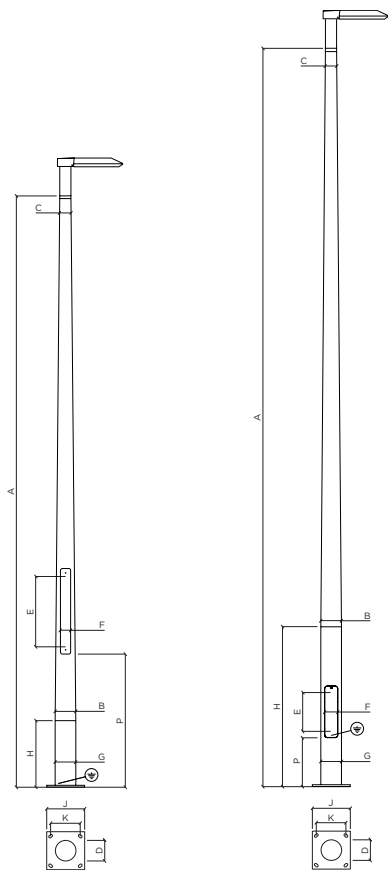
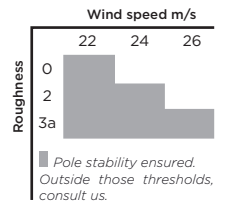


UTYL Round tapered lighting points from 4 m to 5 m
LED 26.5 W - 3 574 lm*



UTYL ROUND TAPERED LED 26.5 W*		PCD9426	PCD9576
A	m Pole height	4	5
B	mm Shaft diameter at base	140	140
C	mm Shaft diameter on top	76	76
D	mm Door: useful depth	62	62
E x F	mm Door: useful height x width	460 x 60	460 x 60
P	m Distance door bottom to plate	0.90	0.35
G	mm Base diameter	140	140
H	m Base height	0.45	1.10
J	mm Base plate dimensions	260 x 260	260 x 260
K	mm Spacing dimensions	200 x 200	200 x 200
L	mm Anchor rods**	4 HA16 M14 - 300	4 HA16 M14 - 300
	kg Weight	20	23
	m Height of the light	4.20	5.20

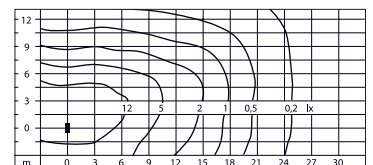
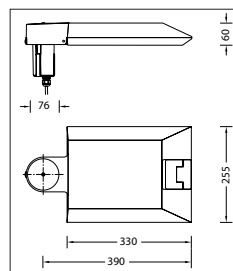
ROUND TAPERED SUPPORT
 Round tapered shaft in glued laminated timber GL24H certified ACERBOIS GLULAM, produced with sawn planks from sustainably managed forests and respecting HTE process. Timber finished with four coats of woodstain.
 Round flush base in galvanized steel and polyester powder coated finish. Overlying top in pressed galvanized steel, polyester powder coated finish. Design and manufacture according to rules defined by DEE 120017-00-0106 Wood and metal lighting columns and specifications from European Technical Approval ETA-18/0016.
CE marked product: Conformity certificate CE 0679-CPR-0473.

STANDARD COLOUR IDENTITY
 Wood: Brume - Metal: Black 100 sanded.

Cpa Car parking area - Pa Public area - Ap Access path - Cp Cycle path - Pf Pedestrian footpath - S Street



LUMINAIRE LED 26,5 W*
 Asymmetrical elliptical lighting.
 3 574 lm - Colour temperature 4 000 K (T° 3 000 K as option).
 Colour rendering index R_a > 80.
 Cast aluminium, aluminium and stainless steel.
 Safety glass. Reflector in pure anodized aluminium.
 Dust-proof and water jet protected.
 Delivered with connecting cable X05BQ-F 4 x 1² - Length 7 m.
 Power supply LED 220-240 V - 0/50-60 Hz.
 DC 170-280 V - Dimmable 1-10 V.
 Class II - IP 66 - IK 08 - Weight: 4.4 kg.



Light distribution LED 26.5 W.

NOTES
 Luminaires delivered without case, light head not assembled on the shaft. Possibility to fix the light on bracket or surface mounted on demand.
 The lighting fixture must be connected to the earth of the base section thanks to the green/yellow wire provided for that purpose.
 *Power and luminous flux data likely to vary.
 **Anchor rods supplied on request only.