

**UTYL** Single shelter  
Ref. PMZ0350

**UTYL** Double shelter  
Ref. PMZ0347



+ Flavard & Saguez design + common product for 2 different uses: bikes shelter and smokers shelter + modular product



**MATERIALS**

Electro-galvanised steel structure, polyester powder coated finish.  
Alveolar polycarbonate roof, electrogalvanized drip.  
Must be fixed to the ground on base plate.



**FIXATION**

Chemical sealing.  
Anchor rods\*: threaded rod M14 x 300.  
Plate spacing dimensions: 200 x 200 mm.  
Fixation holes on plate: Ø 16 x 28 mm.



**MEASUREMENTS**

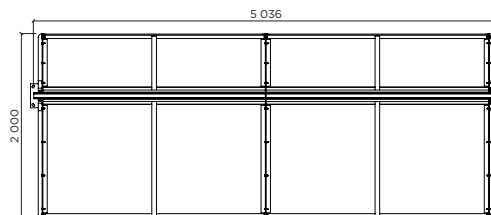
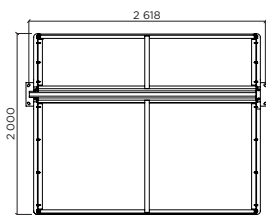
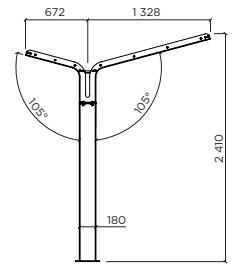
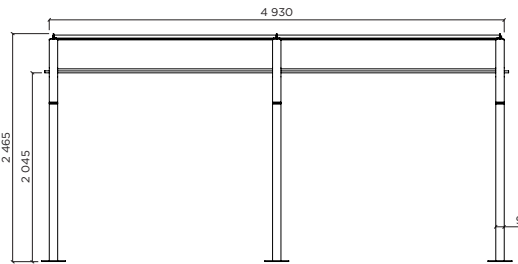
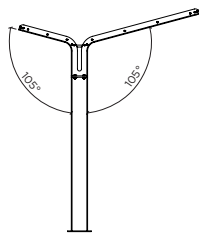
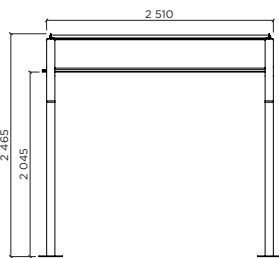
**PMZ0350 Single shelter**  
Storage capacity: 6 bikes  
h x L x w: 2 465 x 2 510 x 2 000 mm  
Plate size: 260 x 260 mm  
Weight: 167.4 kg

**PMZ0347 Double shelter**  
Storage capacity: 12 bikes  
h x L x w: 2 465 x 4 930 x 2 000 mm  
Plate size: 260 x 260 mm  
Weight: 271.5 kg



**STANDARD COLOUR IDENTITY**

Metal: Black 100 sanded.



**NOTE**

\*Anchor rods supplied on request only.