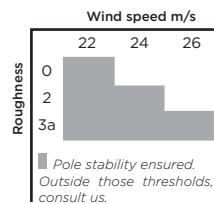
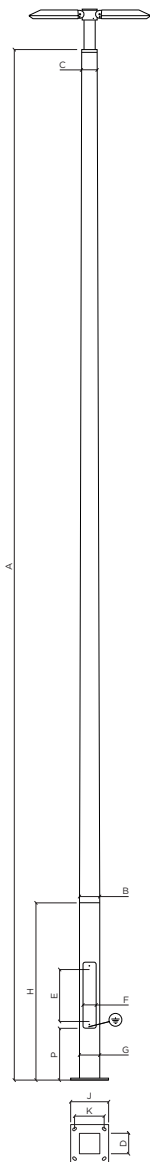


UTYL Square tapered lighting point 7 m
LED 114 W - 9 294 lm*



UTYL SQUARE TAPERED LED 114 W*		PCS9794
A	m Pole height	7
B	mm Shaft section at base	140
C	mm Shaft section on top	100
D	mm Door: useful depth	117
E x F	mm Door: useful height x width	400 x 90
P	m Distance door bottom to plate	0,35
G	mm Base section	140
H	m Base height	1,20
J	mm Base plate dimensions	400 x 400
K	mm Spacing dimensions	300 x 300
L	mm Anchor rods**	4 HA20 M18 - 400
kg	Weight	55
m	Height of the light	7,20

SQUARE TAPERED SUPPORT
 Square tapered shaft in glued laminated timber GL24H certified ACERBOIS GLULAM, produced with sawn planks from sustainably managed forests and respecting HTE process. Timber finished with four coats of woodstain.
 Square flush base in galvanized steel and polyester powder coated finish. Overlying top in pressed galvanized steel, polyester powder coated finish. Design and manufacture according to rules defined by DEE 120017-00-0106 Wood and metal lighting columns and specifications from European Technical Approval ETA-18/0016.

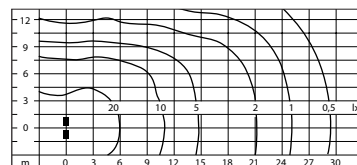
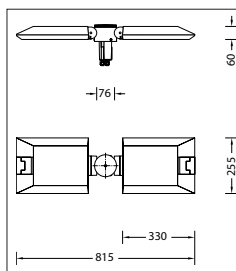
CE marked product: Conformity certificate CE 0679-CPR-0473.

STANDARD COLOUR IDENTITY
 Wood: Brume - Metal: Black 100 sanded.

Cpa Car parking area - Pa Public area - Pr Public road - Ap Access path - Cp Cycle path - Pf Pedestrian footpath - S Street



- LED LIGHT 114 W***
Asymmetrical elliptical lighting.
- 9 294 lm - Colour temperature 4 000 K (T° 3 000 K as option).
Colour rendering index R_a > 80.
Cast aluminium, aluminium and stainless steel.
Safety glass. Reflector in pure anodized aluminium.
Dust-proof and water jet protected.
Flexible head for beam direction 0° or 15°.
Delivered with 2 connecting cables 05BQ-F 4 x 1² - Length 8 m.
Power supply LED 220-240 V - 0/50-60 Hz
DC 170-280 V - Dimmable 1-10 V.
Class II - IP 66 - IK 08 - Weight: 9 kg.



Light distribution LED 114 W.

NOTES
 Luminaire delivered without case, light head not assembled on the shaft. Possibility to fix the light on bracket or surface mounted on demand.
 The lighting fixture must be connected to the earth of the base section thanks to the green/yellow wire provided for that purpose.
 *Power and luminous flux data likely to vary.
 **Anchor rods supplied on request only.