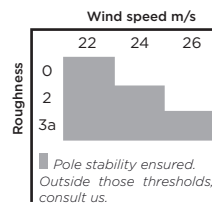
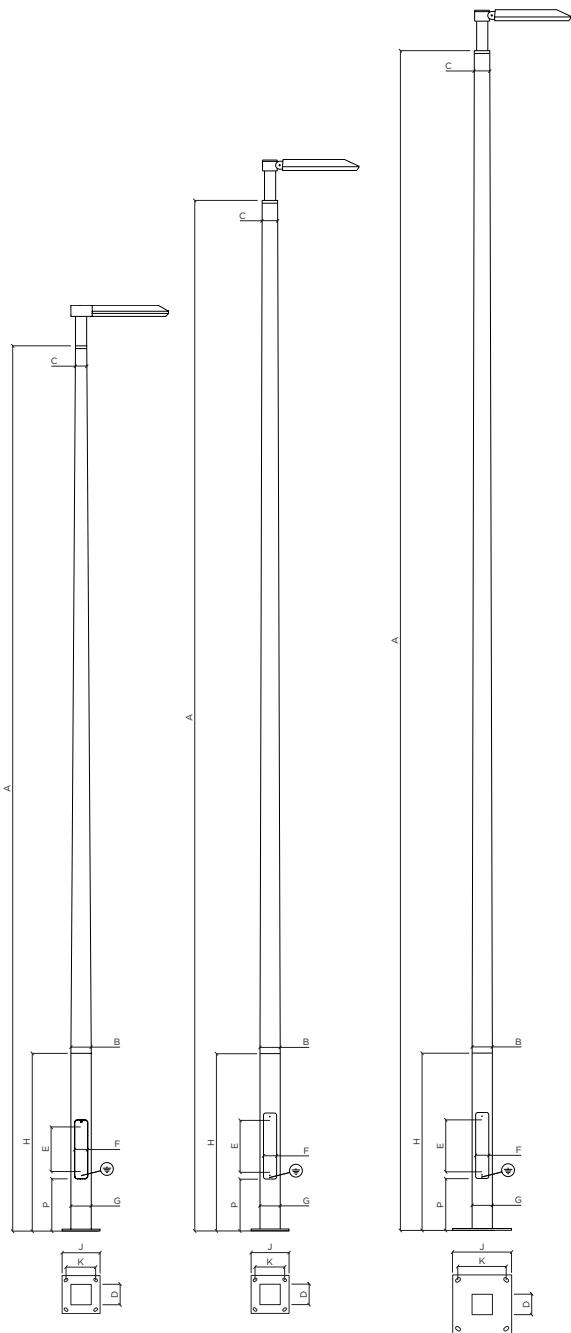


UTYL Square tapered lighting points from 6 m to 8 m
LED 53 W - 7 335 lm*



UTYL SQUARE TAPERED LED 53 W*		PCS9678	PCS9798	PCS9898
A	m Pole height	6	7	8
B	mm Shaft section at base	140	140	140
C	mm Shaft section on top	76	100	100
D	mm Door: useful depth	72	117	117
E x F	mm Door: useful height x width	460 x 70	400 x 90	400 x 90
P	m Distance door bottom to plate	0.35	0.35	0.35
G	mm Base section	140	140	140
H	m Base height	1.20	1.20	1.20
J	mm Base plate dimensions	260 x 260	400 x 400	400 x 400
K	mm Spacing dimensions	200 x 200	300 x 300	300 x 300
L	mm Anchor rods**	4 HA16 M14 - 300	4 HA20 M18 - 400	4 HA20 M18 - 400
	kg Weight	34	55	68
	m Height of the light	6.20	7.20	8.20



SQUARE TAPERED SUPPORT

Square tapered shaft in glued laminated timber GL24H certified ACERBOIS GLULAM, produced with sawn planks from sustainably managed forests and respecting HTE process. Timber finished with four coats of woodstain. Square flush base in galvanized steel and polyester powder coated finish. Overlying top in pressed galvanized steel, polyester powder coated finish. Design and manufacture according to rules defined by DEE 120017-00-0106 Wood and metal lighting columns and specifications from European Technical Approval ETA-18/0016.



CE marked product: Conformity certificate CE 0679-CPR-0473.



STANDARD COLOUR IDENTITY

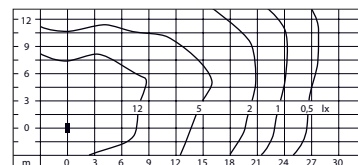
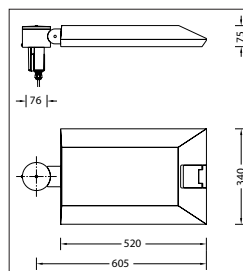
Wood: Brume - Metal: Black 100 sanded.

Cpa Car parking area - **Pa** Public area - **Pr** Public road - **Ap** Access path - **Cp** Cycle path - **Pf** Pedestrian footpath - **S** Street



LED LIGHT 53 W*

- Asymmetrical elliptical lighting.
- 7 335 lm - Colour temperature 4 000 K (T° 3 000 K as option).
- Colour rendering index $R_a > 80$.
- Cast aluminium, aluminium and stainless steel.
- Safety glass. Reflector in pure anodized aluminium.
- Dust-proof and water jet protected.
- Flexible head for beam direction 0° or 15°.
- Delivered with connecting cable X05BQ-F 4 x 1² - Length 9 m.
- Power supply LED 220-240 V - 50-60 Hz.
- DC 170-280 V - Dimmable 1-10 V.
- Class II - IP 66 - IK 08 - Weight: 8.6 kg.



Light distribution LED 53 W.

NOTES

Luminaires delivered without case, light head not assembled on the shaft. Possibility to fix the light on bracket or surface mounted on demand. The lighting fixture must be connected to the earth of the base section thanks to the green/yellow wire provided for that purpose. *Power and luminous flux data likely to vary. **Anchor rods supplied on request only.