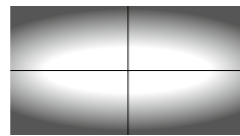


SKALA

Lighting bollards

PBE09781 Low lighting bollard 0.75 m / 1 150 lm - 14 W / Lighting
PBE09782 High lighting bollard 1 m / 1 150 lm - 14 W / Lighting

Use
 Lighting bollards for pathways.



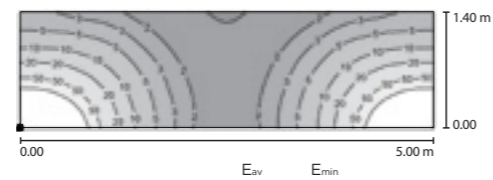
Flat beam light distribution

LED light 14 W

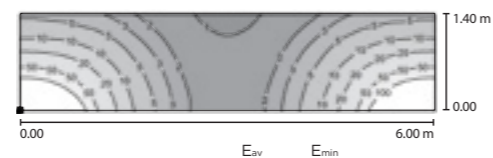
Recessed luminaire with flat beam light distribution.
 LED power supply unit 220-240 V - 0/50-60 Hz - DC 176-224 V - DALI controllable.
 Luminaire made of aluminium alloy, aluminium and stainless steel. Safety glass with optical structure. Optical silicone lens. Dust-tight and water jet protected.
 Safety class II Safety mark
 Protection class IP 65 CE Conformity mark
 Impact strength IK07

Lamp

Luminaire connected wattage 14 W
 Luminaire luminous flux 1 150 lm
 Luminaire luminous efficiency 82.1 lm/W
 Colour temperature* 3 000 K (CRI > 80)
 Ambient temperature $t_{a\max} = 50^{\circ}\text{C}$
 20-year LED module availability guarantee.
 *Other colour temperatures on request.



PBE09781 Low Skala 32 lux 1 lux



PBE09782 High Skala 29 lux 1 lux



Skala - Lighting bollards
 Skala - Light building elements from 3.5 m to 5 m - 19.6 W / 39.2 W
 Skala - Columns from 3.5 m to 5 m

Square shaft

Accoya® acetylated solid wood horizontal braces produced with sawn planks from sustainably managed forests. Timber finished with four coats of woodstain. Square flush base in galvanized steel and polyester powder coated finish. Bollard top in cast aluminium, polyester powder coated finish.

Standard finishes

Wood: Terre d'Ombre
 Metal: Matt fine texture 7006. Finish corresponding to the references PBE09781 and PBE09782. Other colours on request.

Benefits of Accoya® wood

Accoya® wood has a non-toxic core treatment. It is a very dimensionally stable material (equivalent to the best exotic wood). It is renewable, durable, resistant to moisture, insects, and rot.

Maintenance and lifespan

Accoya® wood offers a 25-year warranty against rot (if the wood is placed in the ground) and a 50-year warranty for above-ground wood (even if it is continuously exposed to fresh water). Very low maintenance.

Power supply

The power supply to the bollard is done via a connection box located at the base.

Installation

Fixing with 4 stainless steel dowels anchor studs M10 x 120, supplied only on request. Other type of fixing on consultation.

Technical data that can be consulted and downloaded from our website.

Wood material:



Design by AUBRILAM.

	LED	Height	L x l	Plate dimensions	Spacing dimensions	Fixation hole on plate	Anchor studs	Weight
PBE09781	14 W	0.75 m	120 x 200 mm	108 x 96 mm	80 x 70 mm	12 x 18 mm	4 x M10 - 120 mm	9.7 kg
PBE09782	14 W	1 m	120 x 200 mm	108 x 96 mm	80 x 70 mm	12 x 18 mm	4 x M10 - 120 mm	10.9 kg

Version with 200 x 200 mm fixing plate, and fixing centre distance 150 x 150 mm upon request.