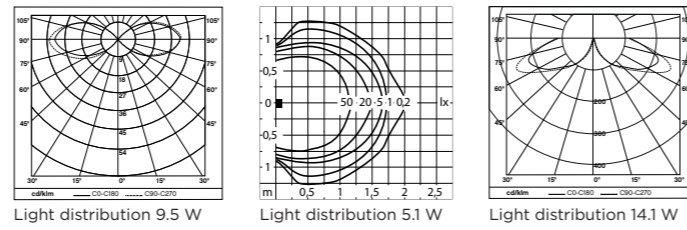


MOSHI

Lighting bollards

PBE03245 Moshi / 900 lm - 9.5 W / Visual guidance
 PBE10131 Moshi 2 / 342 lm - 5.1 W / Visual guidance
 PBE10132 Moshi Strada / 1165 lm - 14.1 W / Lighting

Use
 Lighting bollards for parks, pathways and building perimeters.



Moshi 1 Moshi 2 Moshi Strada

Moshi

LED light 9.5 W

LED luminaire with unshielded distribution.
 No distribution box. HO7RNF connection cable of 1 m in 3G1.5².
 LED power supply unit 220-240 V - 50-60 Hz.
 Luminaire made of powder-coated galvanized steel with stainless steel screws.
 Opalescent PMMA bowl. Dust-tight and water jet protected.
 Safety class I
 CE Conformity mark
 Protection class IP 65
 Impact strength IK10

Lamp

Luminaire connected wattage 9.5 W
 Luminaire luminous flux 900 lm
 Luminaire luminous efficiency 26.5 lm/W
 Colour temperature 3 000 K (CRI > 80)
 Rated temperature t_a = 25°C

Moshi 2

LED light 5.1 W

LED wall luminaire with directed light.
 Connection box for diversion cabling to 5 x 4 mm².
 LED power supply unit 220-240 V - 0/50-60 Hz - DC 176-264 V.
 Luminaire made of aluminium alloy, aluminium and stainless steel. Clear safety glass
 Silicone gasket. Reflector made of pure anodized aluminium. Dust-tight and water jet
 protected.
 Safety class I
 Safety mark CE Conformity mark
 Protection class IP 64 Impact strength IK07

Luminaire colour

Graphite
 Silver

Lamp

Luminaire connected wattage 5.1 W
 Luminaire luminous flux 340 lm
 Luminaire luminous efficiency 67.1 lm/W
 Colour temperature 3 000 K (CRI > 80)
 Ambient temperature t_{a max} = 45°C
 20-year LED module availability guarantee.

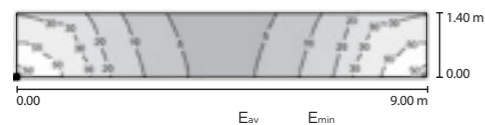
Moshi Strada

LED light 14.1 W

LED luminaire with shielded light. Extensive light distribution with symmetrical
 rotation. No distribution box. HO7RNF connection cable of 1 m in 3G1².
 LED power supply unit 220-240 V - 50-60 Hz.
 Luminaire made of powder-coated aluminium with stainless steel screws. Clear
 polycarbonate bowl. Dust-tight and water jet protected.
 Safety class I
 CE Conformity mark
 Protection class IP 65
 Impact strength IK08

Lamp

Luminaire connected wattage 14.1 W
 Luminaire luminous flux 1165 lm
 Luminaire luminous efficiency 82.6 lm/W
 Colour temperature 3 000 K (CRI > 80)
 Ambient temperature t_{a max} = 45°C



PBE03245 Moshi Strada 20 lux 3 lux



Natty 1 / 2 / 3 lighting bollards
 Lady LED / Lady LED 2 lighting bollards
 Moshi / Moshi 2 / Moshi Strada lighting bollards

Square shaft

Regular square shaft in Accoya® acetylated glued
 laminated timber, produced with sawn planks from
 sustainably managed forests. Timber finished with
 four coats of woodstain. Square flush base and top in
 galvanized steel, polyester powder coated finish.

Standard finishes

Wood: Tonnelier
 Metal: Matt fine texture 7024
 Finish corresponding to the references PBE02950 and
 PBE0160. Other colours on request.

Benefits of Accoya® wood

Accoya® wood has a non-toxic core treatment. It is a
 very dimensionally stable material (equivalent to the
 best exotic wood). It is renewable, durable, resistant to
 moisture, insects, and rot.

Maintenance and lifespan

Accoya® wood offers a 25-year warranty against rot
 (if the wood is placed in the ground) and a 50-year
 warranty for above-ground wood (even if it is
 continuously exposed to fresh water). Very low
 maintenance.

Installation

Fixing with 4 stainless steel anchor studs M12 x 100.
 Other type of fixing on consultation. Anchor bolts
 supplied on request only.

Technical data can be viewed and downloaded from
 our website.

Wood material:



| | Height | L x l | Base height | Plate dimensions | Spacing dimensions | Fixation hole on plate | Anchor studs | Weight |
|----------|--------|--------------|-------------|------------------|--------------------|------------------------|---------------------|---------|
| PBE03245 | 1.08 m | 120 x 120 mm | 120 mm | 200 x 200 mm | 150 x 150 mm | 16 x 24 mm | 4 HA20/M12 - 100 mm | 14.7 kg |
| PBE10131 | 0.8 m | 100 x 100 mm | 120 mm | 200 x 200 mm | 150 x 150 mm | 16 x 24 mm | 4 HA20/M12 - 100 mm | 10 kg |
| PBE10132 | 1 m | 120 x 120 mm | 120 mm | 200 x 200 mm | 150 x 150 mm | 16 x 24 mm | 4 HA20/M12 - 100 mm | 22 kg |